

# Cognisys Scout Reflash Instructions

---

So what is “Reflash” anyways? This is the process of erasing your Scout’s software and loading in a new version. Should you reprogram your controller? Not always – If it is doing everything you want there is no advantage of loading new firmware. If, however, there is a new feature that you want – then by all means upgrade!

Is there risk? Think of updating the firmware as a brain transplant for your controller. Yes, there is risk, but we’ve worked hard to minimize that risk. That being said, refrain from removing the USB connection while it is in the middle of reprogramming. If you are in bootloader mode but haven’t started reflashing the controller, you can safely remove the USB cable at any time.

Before starting be sure to un-install any previous version of our Reflash product before continuing.

The Reflash program requires Oracle’s Java. If this is not present on the PC that you are using you will be taken to Oracle’s web-site. If you are using a Mac, you will have to explicitly download Java from here if it is not already present on your computer:

<http://java.com/en/download/index.jsp>

## PC users:

Download the reflash installer from here:

<http://www.cognisys-inc.com/downloads/reflash/java/ReflashSetup.msi>

Run the installer and follow the installation instructions. The application will be installed on your start menu under a “Cognisys” folder.

## Mac users:

Download the reflash package from here:

<http://www.cognisys-inc.com/downloads/reflash/ReflashInstaller.dmg>

Run the package installer and follow the installation instructions. The application will be on your Launchpad.

*If the firmware package (zip file) you downloaded includes a “gs2011xxxxx.bin” file (where “xxxx” can vary), you should first update the firmware on your Wifi module (Only applies to the Scout Camera Controller). If not, please skip to the “Updating Firmware” section below.*

## **Updating Wifi Firmware:**

**Note:** This only applies to the Scout Camera Controller.

To update the Wifi firmware, your Scout Camera Controller must be turned on with no USB cable attached.

Now, using your computer's Wifi settings, connect up to the listed ScoutCam device. Once connected, use your browser (Firefox has issues, so use an alternative) to go to this address:

<http://192.168.7.1/otafu.html>

You should see a prompt to select the file. Click the "Browse" button, and choose the "gs2011xxxxx.bin" file that is part of the zip file you downloaded containing the firmware. Then press the "Upload" button.

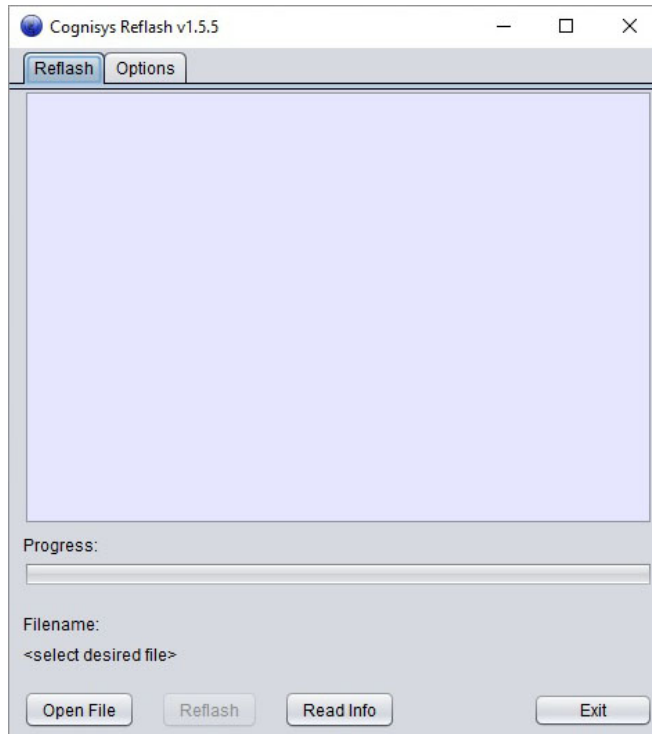
Once complete, you will see "Firmware Upgrade upload Success:". You can now power off your Scout Camera Controller.

## Updating Firmware:

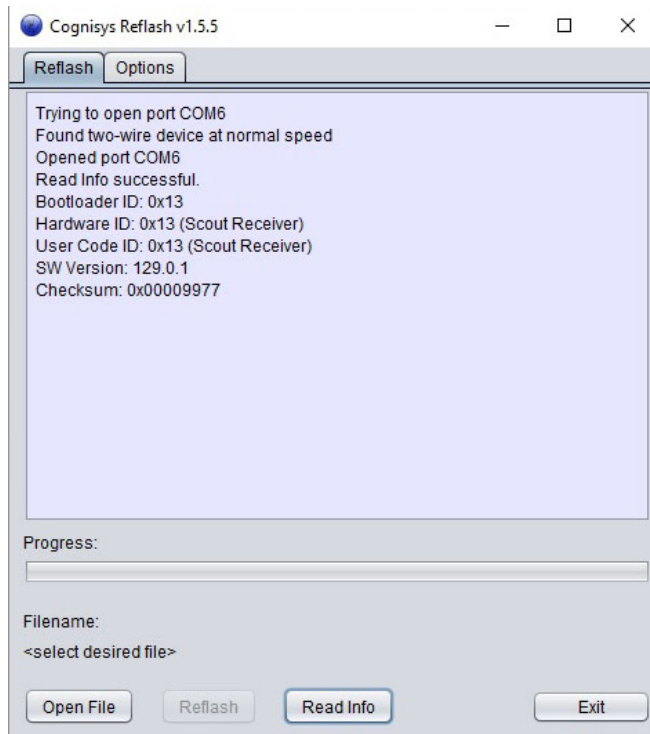
Run the “Reflash” program installed under Start->Cognisys->Reflash, or just “Reflash” on a Mac.

Your Scout equipment must be in bootloader mode in order to reflash it.

1. Remove any batteries or external power from the controller.
2. Plug in USB to your computer and the Scout device (mini-USB).
3. The red or green LED should blink at this point.
4. Run the reflash program.
5. You should now see the following or similar:

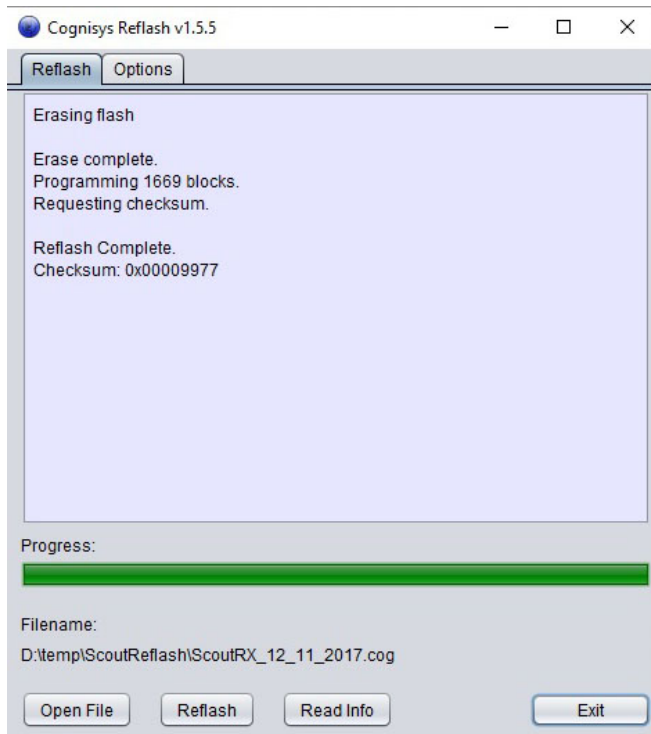


6. Click the “Read Info” button. If the program responds with “could not open a comm port or target not bootstrapped”, be sure that the controller is plugged into the computer and was done so with no batteries or external power. At this point you should see text similar to the following:



7. Click the “Open File” button and select the new firmware. The firmware will end in a “COG” extension. If the file was read properly, the “Reflash” button will become active.
8. Click the “Reflash” button to begin the reprogramming process. This should only take a few seconds. Do not interrupt the process. If an error appears (which can happen on slower computers) press the Reflash button again (making sure the controller is still in bootloader mode).

9. At the end of the reprogramming, you will see text similar to the following:



You can verify the software version when you first turn on the controller. It is displayed on products with an LCD during power-on. For the Scout Camera Controller and PIR it is shown at the bottom of the app.

If you have any issues with the reprogramming process or installing the reflash software, please contact us at [support@cognisys-inc.com](mailto:support@cognisys-inc.com).